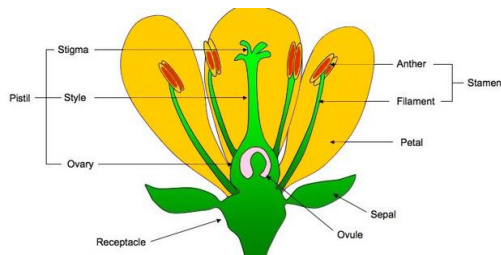


Science -Plants



What I should already know

Which things are living and which are not.

- A variety of **common wild and garden plants**,
- The **structure** of **common flowering plants**, including **trees** (including **leaves, flowers, fruits, roots, bulbs, seeds, stem, trunks and branches**)
- **Seeds** and **bulbs** grow into **mature plants**
- **Plants** need water, light and a suitable **temperature** to grow and stay **healthy**.
- Different **vegetation belts** and **climate zones** around the world
- **Plants** and animals depend on each other to survive.



Key Vocabulary

dispersal	scattered, separated, or spread through a large area
germination	if a seed germinates or if it is germinated , it starts to grow
nutrients	substances that help plants and animals to grow
pollination	To pollinate a plant or tree means to fertilise it with pollen . This is often done by insects
reproduction	It is a biological process by which an organism reproduces an offspring who is biologically similar to the organism.
transportation	taking something from one place to another



Investigate!

- Compare the effect of different factors in **plant** growth (e.g. the amount of water, the amount of light and the amount of **fertiliser**). Discuss what would make this a fair test.
- Place white carnations or celery in dyed water to observe how plants **transport** water.
- Discover how **seeds** are formed by observing **plant life cycles**.
- **Dissect** a **flower** and identify each of the different parts that help with **fertilisation**